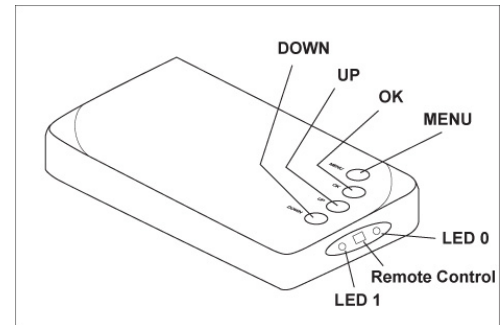
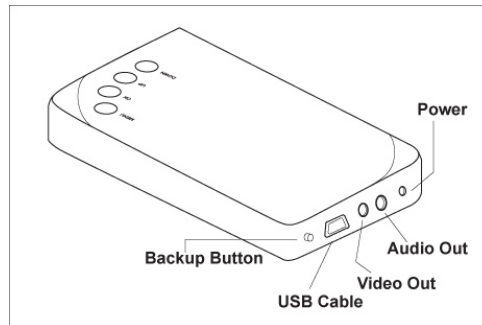


1. Getting Started

Product Overview

Kit Contents

- 2.5" HDD Player
- USB Cable
- Power Adapter
- Installation CD
- Screw Pack
- Stand
- Audio Cable
- Video Cable
- Remote Control
- Battery 2 units
- Carry Bag
- QIG

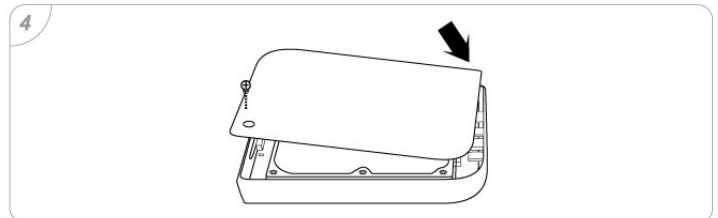
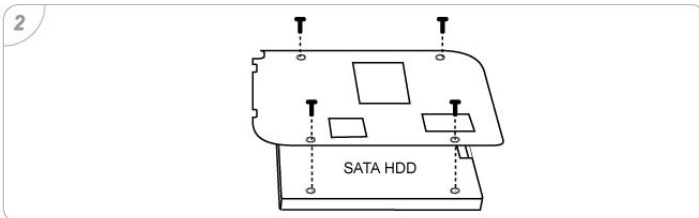
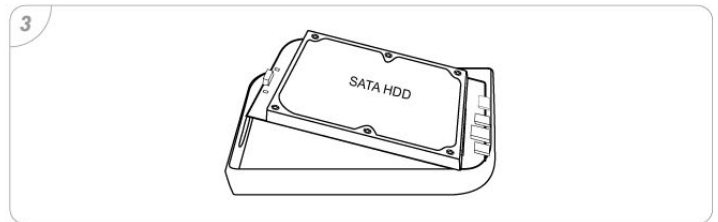
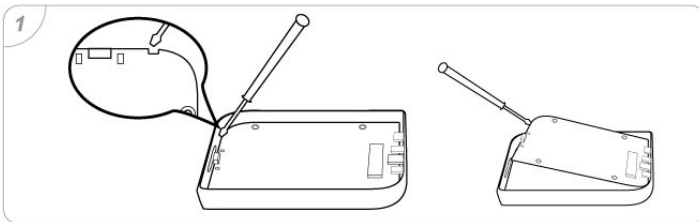


2. Assembling the 2.5" SATA HDD

- Step 1 : Open the enclosure , and take out the PCB tray.
- Step 2 : Put SATA HDD on the PCB with screws.
- Step 3 : Set PCB with HDD into the enclosure.
- Step 4 : Put on aluminum cover and screw on.

Minimum System Requirements

- Available OHCI-compliant USB port
- Windows 98SE/ME/2000/XP/VISTA
- MAC OS 9.x or above



3. Connecting the Drive in USB storage mode

Note : If using Windows 98SE , you must install the device drive on your system before connecting the drive.

1. Connect one end (USB A Type) of the USB Cable to your computer.
2. Connect the other end (USB B Type) of the USB Cable to the USB port on the back of the drive.
3. Connect the power adapter to the power socket of the enclosure and switch the power on.
4. The power indication LED (on the front panel) will illuminate and the presence of an external drive will be visible on your PC monitor or laptop.

4. Installing OTB Software in USB storage mode

Note : Please select proper OTB .exe version for your computer before installation , OTB supports Windows System only.

1. Put Installation CD-ROM into the Optical Drive on your computer or laptop.
2. Select the correct OTB software version and then follow the installation procedures.
3. Once OTB is successfully installed on the computer or laptop, an OTB icon will appear on the system tray of your computer.

5. Disconnecting the Drive in USB storage mode

Caution : To prevent data loss always be sure to close all active applications before shutting down the drive.

Windows

1. Double-click the Safely Remove Hardware icon in your system tray (typically located on the bottom right corner of your desktop).
2. Select the appropriate device from the list and click "Stop". Click "OK" to confirm your selection of the drive to be disconnected.
3. Click "Close" and ensure that the drive is powered off already.

MAC

1. Find the Removable Disk icon associated with the drive that you want to disconnect and drag it to the Trash icon on your desktop.
2. After the disk icon disappears from the desktop and the drive is powered off, you may safely disconnect the USB cable from your computer.

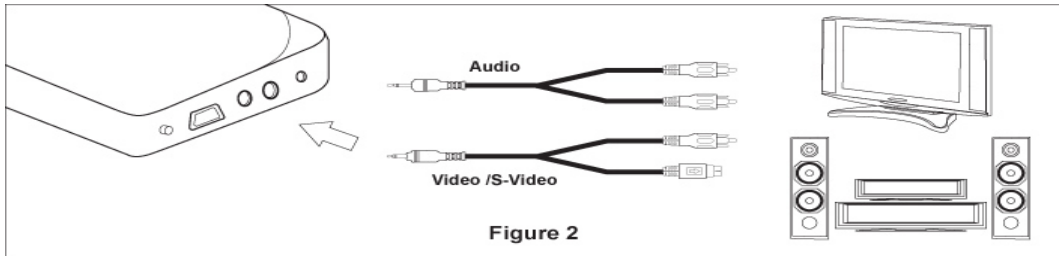
6. Quick Media Playback

Note : Before start to play media file , HDD has to be FAT16/32 or NTFS formatted , else format will not be recognized by the player.

Note : The player supports multi-partitions , the 2nd partition will be auto-recognized as SECURITY partition with default password "0000".

Note : To play the video file with subtitle displayed correctly , please put the video file and subtitle file in the same folder.

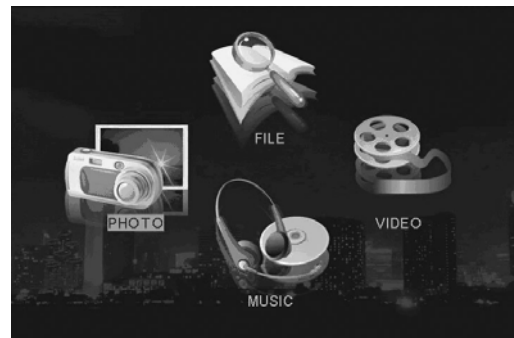
1. Please connect the player to the TV set , audio and video has to be plugged to the correct position , and set your TV to right channel for video.



2. After the player is well-connected to TV set , please power on the player , a initial message "OPTIMIZING YOUR SYSTEM" will soon be shown on TV.



3. Then the operation page will be displayed on TV , you can use the remote control or on-device buttons to select and play media files.



7. Remote Control

Note : Please use the remote control straight to the player , not to the TV.



Remote Control Function Chart			
OK	Enable the selection	REV	Reverse files
UP	Move to upper	FWD	Forward files
DOWN	Move to lower	LASTPAGE	Jump to last page
LEFT	Move to left	PLAY	Continue playback
RIGHT	Move to right	NEXTPAGE	Jump to next page
PHOTO	PHOTO Mode	PREVIEW	Preview file
MUSIC	MUSIC Mode	STOP	Stop playback
VIDEO	VIDEO Mode	NEXT	Next file
FILE	FILE Mode	VOL+	Increase the volume
MAIN MENU	Go to the main menu	VOL -	Decrease the volume
SETUP	Make system settings	MUTE	Turn off the sound
INFO	See info of the file	ZOOM	Zoom the photo
PAUSE	Pause playback	REPEAT	Repeat the file playback
SLIDESHOW	music with slideshow photo	TRANSITION	Choosing the sound EQ
ROTATE	Rotate the photo	TV/VGA	VGA or TV mode selection

8. Remarks

1. The detailed installation manual can be found in the "User Manual" of the CD.
2. The product is compliant with CE/FCC/UL/RoHS/WEEE.
3. Windows 98SE/ME/2000/XP/VISTA are trademarks of Microsoft Corporation. Macintosh and MAC are trademarks of Apple Compute.