

3.5" IDE/SATA to USB2.0 Enclosure Quick Install Guide

1. Getting Started

Kit Contents

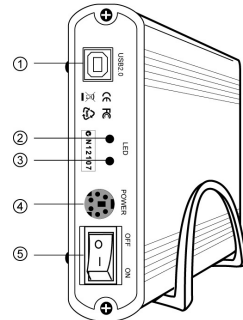
- 3.5" Enclosure
- USB Cable
- Power Adapter
- Driver CD
- Screw Pack
- Stand
- QIG
- SATA Data Cable / SATA Power Cable
- IDE Flat Cable / IDE Power Cable

Product Overview

1. USB Connector
2. Data LED
3. Power LED
4. Power Switch
5. Power Socket

Minimum System Requirements

- Available OHCI-compliant USB port
- Windows 98SE/ME/2000/XP/VISTA
- MAC OS 9.x or above



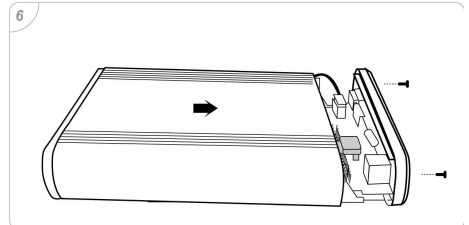
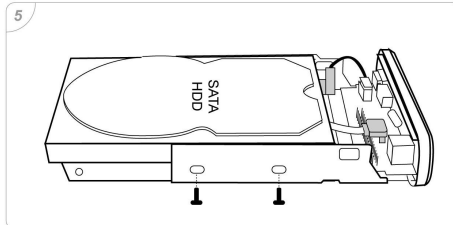
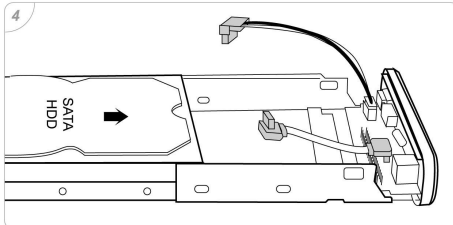
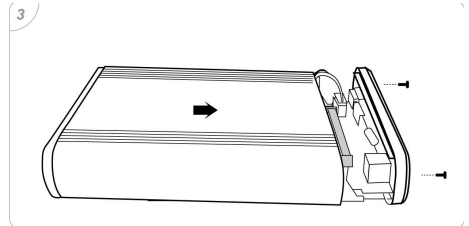
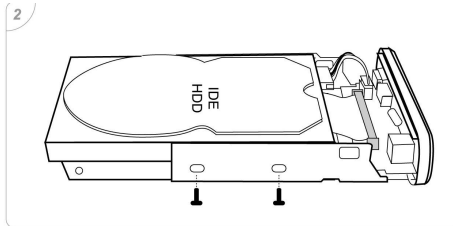
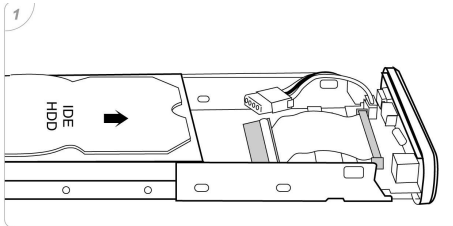
2. Assembling the 3.5" HDD

IDE :

- Step 1 : Take out the metal tray and put the IDE HDD in it at correct direction.
- Step 2 : Connect IDE HDD to the IDE flat cable and the power cable of IDE HDD. Also put screws in the metal tray.
- Step 3 : Position the PCB and HDD set carefully into the aluminum casing, put the screws in and tighten them.

SATA :

- Step 4 : Take out the metal tray and put the SATA HDD in it at correct direction.
- Step 5 : Connect SATA HDD to the SATA data cable and the power cable of SATA HDD. Also put screws in the metal tray.
- Step 6 : Position the PCB and HDD set carefully into the aluminum casing, put the screws in and tighten them.



3. Connecting the Drive

Note : If using Windows 98SE , you must install the device drive on your system before connecting the drive.

1. Connect one end (USB A Type) of the USB Cable to your computer.
2. Connect the other end (USB B Type) of the USB Cable to the USB port on the back of the drive.
3. Connect the power adapter to the power socket of the enclosure and switch the power on.
4. The power indication LED will be illuminated and the presence of an external drive will be visible on your PC.

4. Disconnecting the Drive

Caution : To prevent data loss always be sure to close all active applications before shutting down the drive.

Windows

1. Double-click the Safely Remove Hardware icon in your system tray (typically located on the bottom right corner of your desktop).
2. Select the appropriate device from the list and click "Stop". Click "OK" to confirm your selection of the drive to be disconnected.
3. Click "Close" and ensure that the drive is powered off already.

MAC

1. Find the Removable Disk icon associated with the drive that you want to disconnect and drag it to the Trash icon on your desktop.
2. After the disk icon disappears from the desktop and the drive is powered off, you may safely disconnect the USB cable from your computer.

5. Remarks

1. The detailed installation manual can be found in the "User Manual" of the CD.
2. The product is compliant with CE/FCC/UL/RoHS/WEEE.
3. Windows 98SE/ME/2000/XP/VISTA are trademarks of Microsoft Corporation. Macintosh and MAC are trademarks of Apple Computer.