

1. Getting Started

Kit Contents

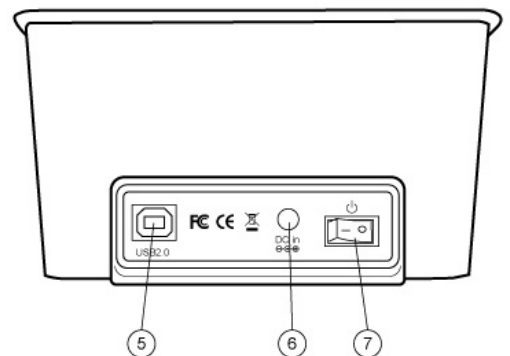
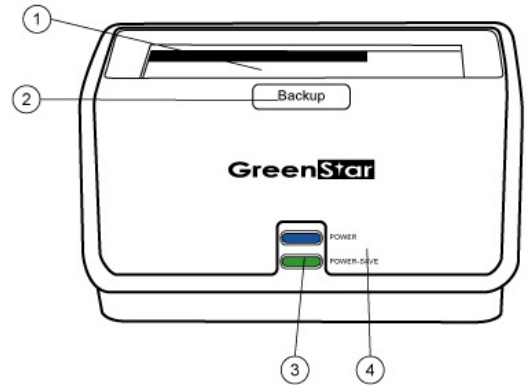
- SATA HDD Docking
- USB Cable
- Power Adapter
- Installation CD
- QIG

Minimum System Requirements

- Available OHCI-compliant USB port
- Windows 98SE/ME/2000/XP/VISTA
- MAC OS 9.x or above

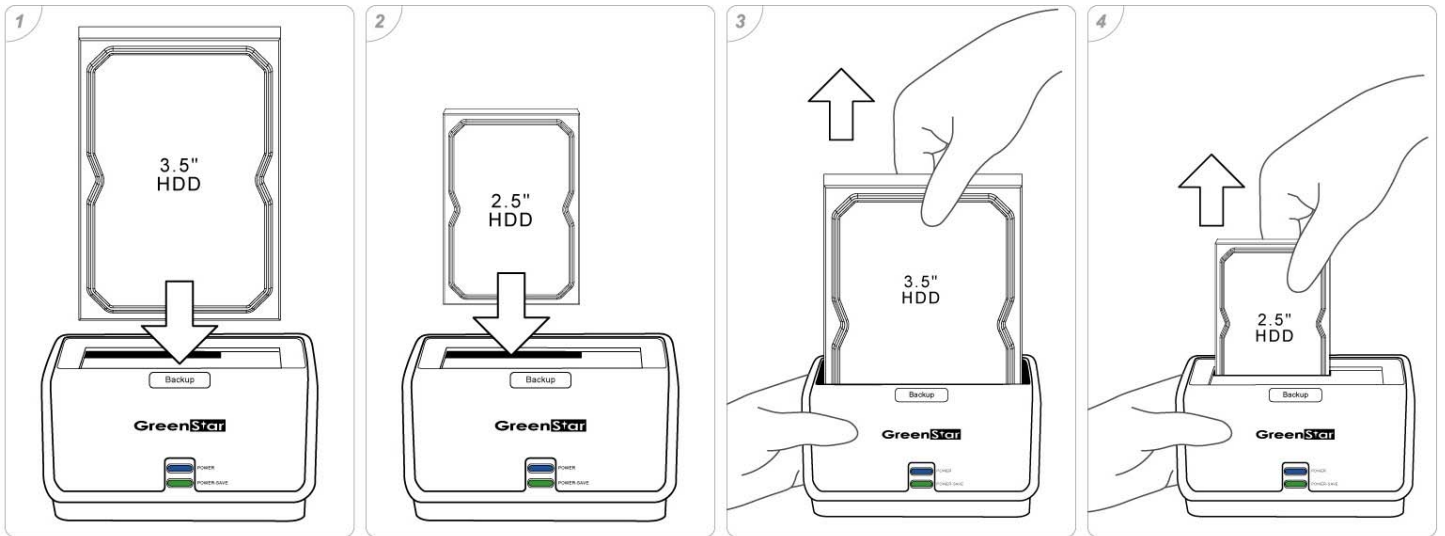
Product Overview

1. Cover
2. OTB Button
3. Power-Save LED
4. Power LED
5. USB2.0 Port
6. DC Jack
7. Power Switch



2. Assembling the SATA HDD into the Docking

1. The docking supports 2.5" or 3.5" SATA HDD directly plug in to the SATA connector, which is instructed by below photo 1 and 2.
2. You can easily hot-swap the HDD by directly pulling it out from the docking, which is instructed by below photo 3 and 4.



3. Connecting the Drive

Note : If using Windows 98SE, you must install the device driver on your system before connecting the drive.

1. Connect one end (USB A Type) of the USB Cable to your computer.
2. Connect the other end (USB B Type) of the USB Cable to the USB port on the back of the device.
3. Connect the power adapter to the power socket of the docking and switch the power on.
4. The "Power" LED will illuminate and the presence of an external drive will be visible on your PC monitor or laptop.

4. LED indication of the Docking

Power LED :

1. The power LED will be illuminated while the power supply is connected to the Docking.
2. The power LED will be flashing while Read/Write access to the HDD.

Power-Save LED :

1. The Power-Save LED will only be flashing when there is no Read/Write access to the HDD after 5 minutes. (5 minutes is the default period)
2. If need to customize the preferred period of the Power-Save mode, please use the Power Saving Tool. (Please refer to below section 5.)

5. Power Saving Tool

Note : Power Saving Tool supports Windows 2000 / XP / Vista only..

Note : Power Saving function is an auto power control by embedded firmware , no need extra software installed.

1. By installing Power Saving Tool to the PC , user can customize power saving function. The statistic data of power saving details can be seen also.
2. That Power Saving Tool offers lower power consumption , cool and quiet operation of a particular drive.

6. Installing OTB Software

Note : Please select proper OTB .exe version for your computer before installation , OTB supports Windows System only.

Note : Please press OTB button for 2 seconds at least to make the copy function work well.

1. Put Installation CD-ROM into the Optical Drive on your computer or laptop.
2. Select the correct OTB software version and then follow the installation procedures.
3. Once OTB is successfully installed on the computer or laptop, an OTB icon will appear on the system tray of your computer.

7. Disconnecting the Drive

Caution : To prevent data loss always be sure to close all active applications before shutting down the drive.

Windows

1. Double-click the Safely Remove Hardware icon in your system tray (typically located on the bottom right corner of your desktop).
2. Select the appropriate device from the list and click "Stop". Click "OK" to confirm your selection of the drive to be disconnected.
3. Click "Close" and ensure that the drive is powered off already.

MAC

1. Find the Removable Disk icon associated with the drive that you want to disconnect and drag it to the Trash icon on your desktop.
2. After the disk icon disappears from the desktop and the drive is powered off, you may safely disconnect the USB cable from your computer.

8. Remarks

1. The detailed installation manual can be found in the "User Manual" of the CD.
2. The product is compliant with CE/FCC/UL/RoHS/WEEE.
3. Microsoft, Windows 98SE/ME/2000/XP/VISTA are trademarks of Microsoft Corporation. Apple, Macintosh and MAC are trademarks of Apple Computer.