

# Quick Install Guide

## 2.5" SATA RAID Box , USB + eSATA

### 1. Getting Started

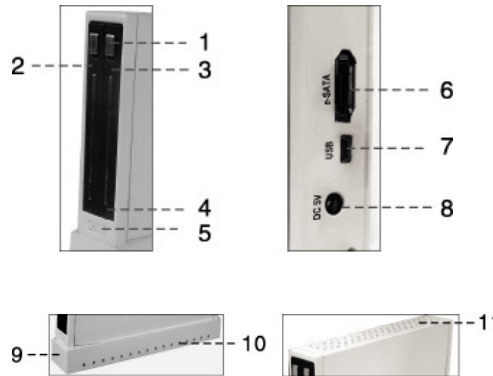
#### Kit Contents

- 2.5" RAID Enclosure
- eSATA Cable
- USB Cable
- Power Adapter
- Installation CD
- Stand
- Quick Install Guide

#### Minimum System Requirements

- Available USB / eSATA port
- Windows 2000/2003/XP/VISTA or later
- MAC OS X 10.4.8 or above
- Linux

#### Product Overview



1. Latch
2. HDD 1 Panel
3. HDD 2 Panel
4. LED Indicator
5. Reset Button
6. eSATA port
7. USB port
8. DC Jack
9. Product Base
10. Heat Dissipation Aperture (Base)
11. Heat Dissipation Aperture (Product)

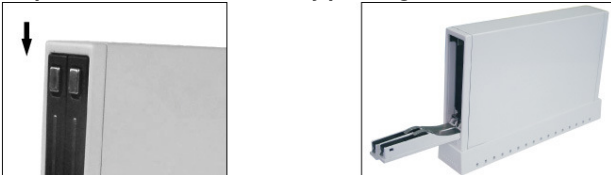
★ **Caution : Pressing No.5 Reset button may result in the reset of the device , please carefully use this function because the device will be re-built after reset.**

### 2. Assembling the 2.5" SATA HDD

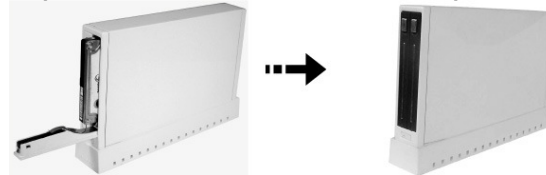
*Note : The mini RAID box features the tool-free mechanical structure , only 3 seconds installation required.*

*Caution : Make sure HDD is inserted properly in the enclosure and do not force to close the panel when the HDD is put in wrong direction.*

#### Step 1 : Push down the latch by pushing the button



#### Step 2 : Insert the SATA HDD and close the panel



### 3. Connecting the Drive

*Note : Before connection , make sure the connectors are clean to avoid the short circuit.*

#### Connecting via USB (Diagram 1)

1. Plug the DC adapter into the device.
2. Connect USB cable between the device and PC

#### Connecting via eSATA (Diagram 2)

3. Plug the DC adapter into the device.
4. Connect eSATA cable between the device and PC



Diagram 1

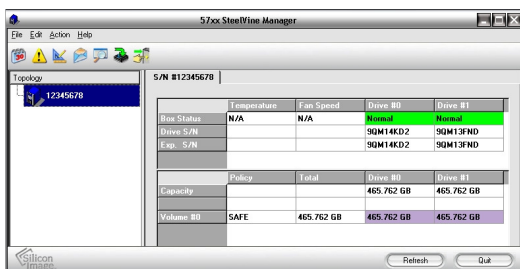


Diagram 2

### 4. RAID Mode Setting

*Note : Make use of the embedded SteelVine Manager to set up the preferred RAID Mode and get some system information.*

*Caution : It may cause data loss if changing RAID mode without data backup. Always make backup before changing RAID mode.*



1. Find the SteelVine manager software from the CD ROM , and click the **Setup.exe** to install it.
2. You can find a quick system icon on the desktop of the monitor while the installation is correctly finished.
3. You can use SteelVine manager to set up RAID mode (6 modes)

### 5. Remarks

1. The detailed installation manual can be found in the " Sil5744\_Users\_Guide" of the CD.
2. The product is compliant with CE/FCC/UL/RoHS/WEEE.
3. Windows 98SE/ME/2000/XP/VISTA are trademarks of Microsoft Corporation. Macintosh and MAC are trademarks of Apple Computer.