

1. Getting Started

Kit Contents

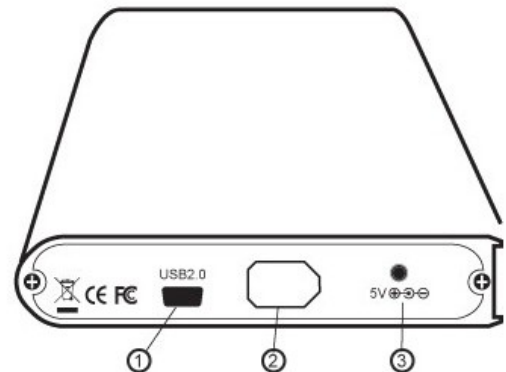
- 2.5" Enclosure
- USB Y Cable
- 1394a Cable
- USB to DC-5V Power Cable
- Installation CD
- Screw Pack
- Carry Bag
- QIG

Minimum System Requirements

- Available OHCI-compliant USB port
- Windows 2000/XP/VISTA/7
- MAC OS 10.x or above

Product Overview

1. USB2.0 Port
2. 1394a Port
3. DC Jack



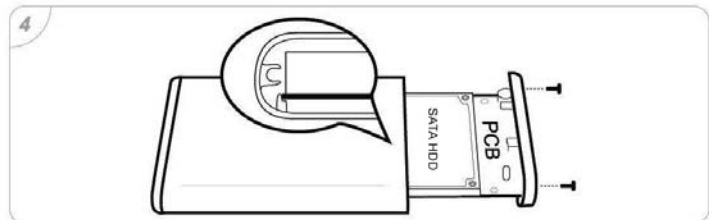
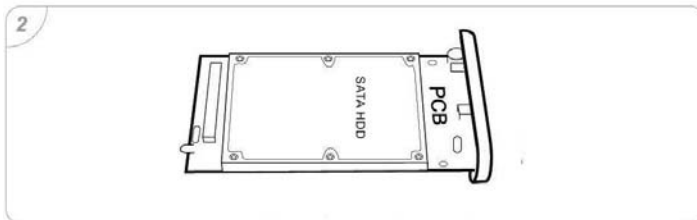
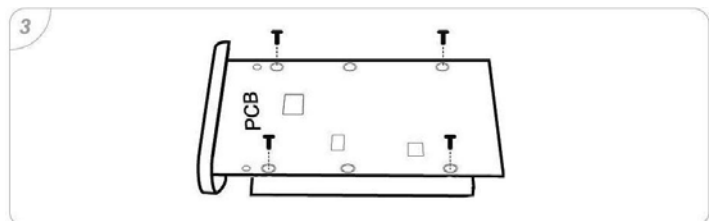
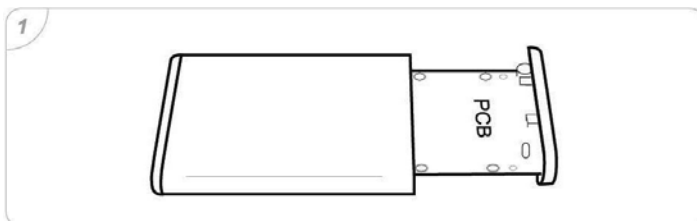
2. Assembling the 2.5" SATA HDD

Step 1 : Open the enclosure, and take out the PCB

Step 2 : Insert SATA HDD onto the connector of PCB

Step 3 : Put in the screws and tighten HDD.

Step 4 : Position the PCB and HDD set carefully into the aluminum casing, put the screws in and tighten them.



3. Connecting the Drive

USB connection

1. Connect one end (USB A Type) of the USB Y Cable to your computer.
2. Connect the other end (USB mini 5) of the USB Y Cable to the USB port on the back of the drive.
3. The power indication LED (on the front of panel) will illuminate and the presence of an external drive will be visible on your PC monitor or laptop.

Note : If USB bus connection is not able to power up your drive, it means that drive needs additional power (high power consumption drive). Please connect simultaneously USB to DC cable to the enclosure, and it will offer additional power to the drive.

1394a connection

1. Connect one end of the 1394a Cable to your computer.
2. Connect the other end of the 1394a Cable to the Firewire port on back of the drive.
3. The power indication LED (on the front of panel) will illuminate and the presence of an external drive will be visible on your PC monitor or laptop..

4. Disconnecting the Drive

Caution: To prevent data loss always be sure to close all active applications before shutting down the drive.

Windows

1. Double-click the Safely Remove Hardware icon in your system tray (typically located on the bottom right corner of your desktop).
2. Select the appropriate device from the list and click "Stop". Click "OK" to confirm your selection of the drive to be disconnected.
3. Click "Close" and ensure that the drive is powered off already.

MAC

1. Find the Removable Disk icon associated with the drive that you want to disconnect and drag it to the Trash icon on your desktop.
2. After the disk icon disappears from the desktop and the drive is powered off, you may safely disconnect the USB cable from your computer.

5. Remarks

1. The detailed product manual can be found in the "User Manual" in the CD.
2. The product is compliant with CE/FCC/UL/RoHS/WEEE.