

1. Getting Started

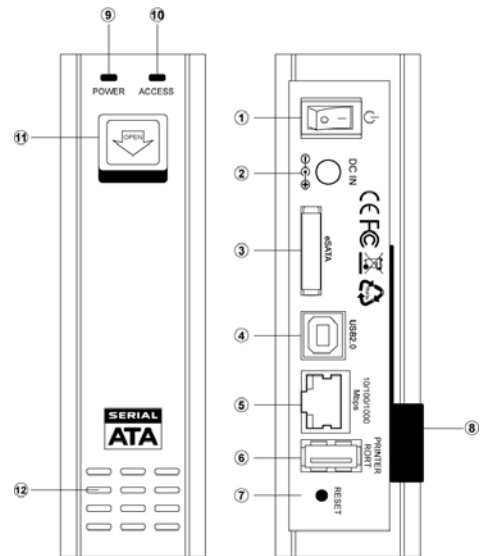
Kit Contents

- NAS Enclosure
- Ethernet cable
- eSATA cable
- USB cable
- Power Adapter
- Installation CD
- QIG

Minimum System Requirements

- Windows 2000/XP/VISTA/7
- Linux/UNIX
- MAC OS 9.x or above

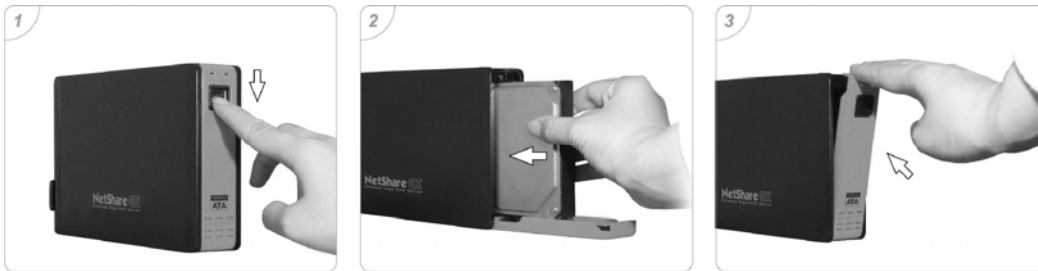
- ① Power Switch
- ② DC Connector
- ③ eSATA Connector
- ④ USB2.0 Device Connector
- ⑤ LAN RJ45 Connector
- ⑥ Printer Port
- ⑦ Reset Button
- ⑧ HDD Ejection Stick
- ⑨ Power LED Indicator
- ⑩ Access LED Indicator
- ⑪ Open Switch
- ⑫ Heat Dissipation Vents



2. Start to Assemble & Configure

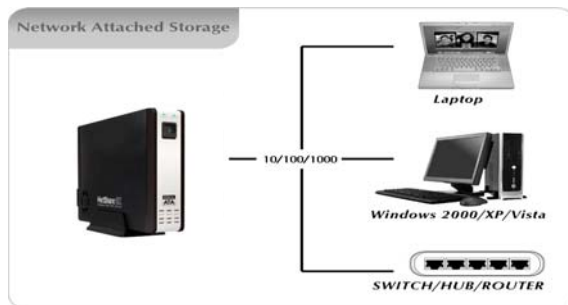
① Install SATA hard disk into NAS enclosure

Pull down the "Open" switch and follow the below steps to install SATA hard disk into the enclosure.



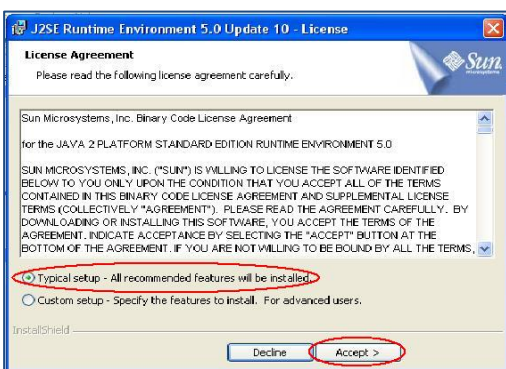
② Cable connection and power on NAS enclosure

- Please make sure your internet connection is working.
- Please connect LAN cable to the LAN port of the ME-752GN-S and put the other end to the LAN port of switch/hub/router which is internet connected.
- Connect the power cable, and power on the NetShare GX.
- If using LAN mode, please do not connect USB or eSATA cable simultaneously.



③ Install J2SE program for executing the NAS Tracker

Insert the CD into your PC and find "J2SE Runtime Environment". Please double click it to setup, and setup wizard will lead you to install this application program.



④ Executing the NAS Tracker to find out the NAS device

"NAS Tracker" could help you to search the NAS device over the network directly. After install the J2SE, you can copy "NAS Tracker.jar" from install CD to your PC, double check it to execute the tracker function.



Note : Above program is Windows base utility.

Note : Instead of accessing NAS by above NAS Tracker program, there is another way to access NAS by filling in default IP address of NAS "169.254.0.1" in your web browser. When following this way, you have to set the IP of your computer to be at the same domain such like 169.254.0.XXX

⑤ User Name & Password

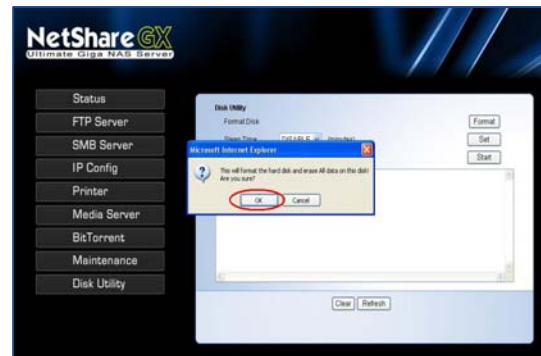
The system will request the user name and password for user login.

Default value of user name: **admin** & password: **admin**, and click **OK** to access NAS Service Manager



⑥ Format hard disk

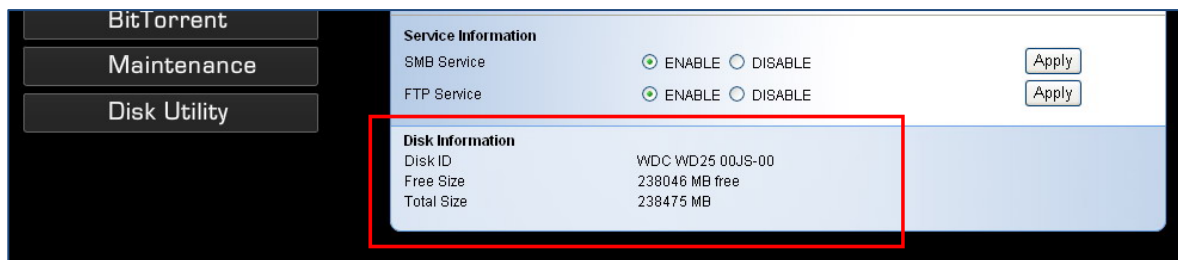
NetShare GX requests FAT32 as the recognized file system for LAN mode, the file system of the drive needs to be formatted when using it in NetShare enclosure at the first time.



3. Start to use NAS functions

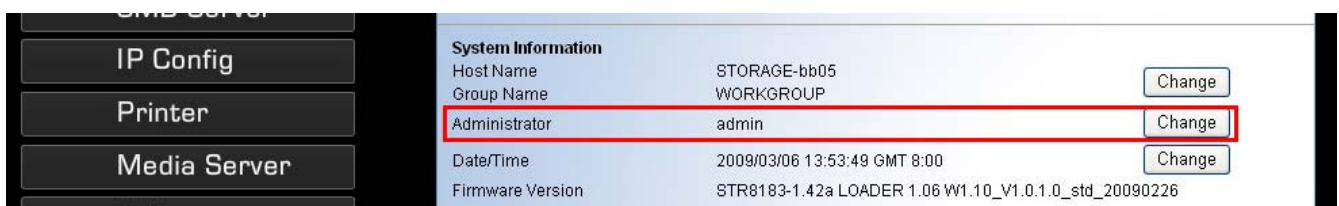
① Check if the hard drive is available

If the hard disk is formatted completely, you will see the hard disk information from the "Disk Information" under "Status" icon. And you can start to use the NAS functions.



② Change password of administrator

Click **Status** item, and click the **Change** to modify the administrator's password. Please remember new password if it is set.



③ Start Browser: NetShare manager

All procedures are completed now!! You can enter new password to manage your own NAS!

4. Remarks

1. The full NAS operation manual can be found in the "User Manual" of the CD.
2. The product is compliant with CE/FCC/UL/RoHS/WEEE.