

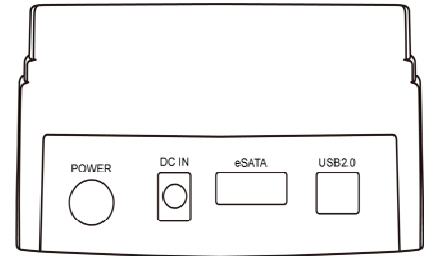
1. Getting Started

Kit Contents

- SATA Dock Station
- USB2.0 Cable
- eSATA Cable
- Power Adapter
- QIG

Minimum System Requirements

- Windows 2000 / XP / VISTA / 7 / 8
- MAC OS 9.x or above
- Available OHCI-compliant USB & eSATA port



2. Assembling Hard Drive

Installation :

1. Inserting the hard drive from the top



3.5" HDD



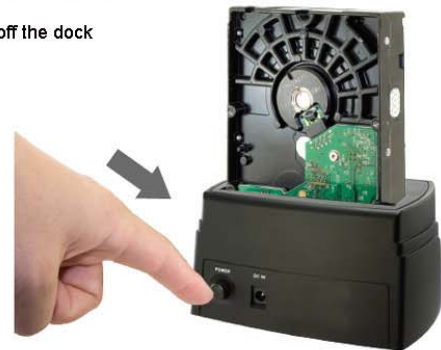
2.5" HDD

2. Connecting the power supply to the dock station



Uninstallation :

1. Power off the dock



2. Unplug the drive from the top of the dock



3.5" HDD



2.5" HDD

3. Formatting Hard Drive

In order to use a hard drive, or a portion of a hard drive, in Windows you need to first partition it and then format it. This process will then assign a drive letter to the partition allowing you to access it in order to use it to store and retrieve data.

All hard disk management is done in the Disk Management Administrative Tool. Follow these steps to open this tool:

1. Click on the **Start** button and select the **Control Panel** option.
2. If in Classic control panel mode, double-click on the **Administrative Tools** icon and then double-click on **Computer Management** icon. If your control panel is in the Category view, click on **Performance and Maintenance**, then click on **Administrative Tools**, and finally double-click on the **Computer Management** icon.
3. When the Computer Management screen opens, click on the **Disk Management** option under the **Storage** category. This will present you with a screen called **The Disk Management Screen**.

To make a partition from the unused space you would do the following.

1. Right click on the space listed as unallocated.
2. At the menu that comes up, click on the New Partition option.
3. You will now be presented with a wizard as to how you would like the partition to be created. At the first screen press Next.
4. At the following screen, determine if you need a primary or extended partition. Most people will be fine selecting Primary Partition. Select Primary Partition and press Next.
5. At the next screen you will be prompted to type in how much of the unallocated space you would like used for the new partition. Regardless, of what you decide, you need to enter a size in the Partition size in MB: field, or stick with the default size, and press the Next button.
6. At the next screen select the drive letter you would like assigned to it, or use the default one given. When done, press the Next button. The drive letter that you assign here will be how you access the partition later.
7. In this step you will determine how you would like the new partition to be formatted. For the most part you are advised to use the NTFS file system. If you need a file system that can be readable by older operating systems like DOS, Windows 95, Windows 98, or Windows ME, then you should instead choose the FAT32 file system.
8. Type a name in the Volume Label field that will be associated with this partition or leave it blank.
9. Finally press the Next button and you will come to a summary screen. Review how the partition will be created, and if you are satisfied, press the Finish button to complete the creation and formatting of your new hard disk partition.

When the computer finishes creating and formatting the new partition you will be presented with the Disk Management screen again and will see that you have a new partition and drive letter on your computer. Now you can use that drive to start storing your data.

4. Connecting the Drive

Note : Do not connect the USB cable and the eSATA cable at the same time.

USB connection

1. Connect one end of the USB cable to your computer.
2. Connect the other end of the USB cable to the USB port on the back of the drive.
3. Connect the power adapter to the power socket of the enclosure and switch the power on.
4. The power indication LED will illuminate and the presence of an external drive will be visible on your PC monitor or laptop.

eSATA connection

1. Connect one end of the eSATA cable to your PC or Laptop.
2. Connect the other end of the eSATA cable to your external enclosure.
3. Connect the power adapter to the power socket of the enclosure and switch the power on.

5. Disconnecting the Drive

Caution : To prevent data loss always be sure to close all active applications before shutting down the drive.

Windows

1. Double-click the Safely Remove Hardware icon in your system tray (typically located on the bottom right corner of your desktop).
2. Select the appropriate device from the list and click "Stop". Click "OK" to confirm your selection of the drive to be disconnected.
3. Click "Close" and ensure that the drive is powered off already.

MAC

1. Find the Removable Disk icon associated with the drive that you want to disconnect and drag it to the Trash icon on your desktop.
2. After the disk icon disappears from the desktop and the drive is powered off, you may safely disconnect the USB cable from your computer.