

1. Getting Started

Kit Contents

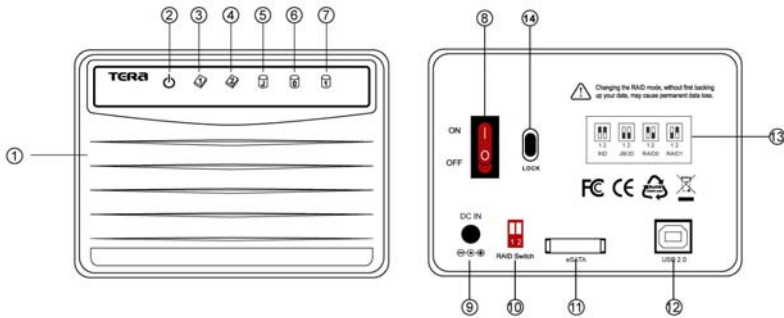
- ME-280J Dual Bay Enclosure
- USB Cable
- eSATA Cable
- Power Adapter
- Installation CD
- QIG

Minimum System Requirements

- Available OHCI-compliant USB port
- Serial ATA equipped PC (eSATA) , WIN 2000 / XP / VISTA , Win 7
- Serial ATA equipped MAC (eSATA) , MAC OS 10.3.x or higher
- Computer embedded Serial ATA host with the support of port multiplier function.

Product Overview

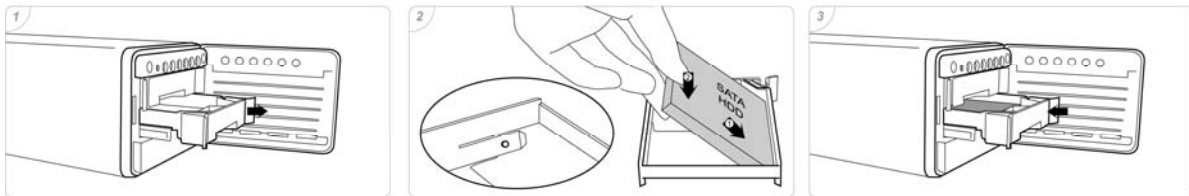
1. Front Casing Door
2. Power LED
3. HDD 1 Ready / Access LED
4. HDD 2 Ready / Access LED
5. JBOD LED
6. RAID 0 LED
7. RAID 1 LED
8. Power Switch
9. Power Jack
10. RAID Switch
11. eSATA Connector
12. USB2.0 Connector
13. RAID mode indication
14. K-Slot for Kensington-Lock



2. Assembling the 2.5" SATA HDD

1. Open the casing door and pull out the hard drive tray.
2. Tenderly pull the plastic side-panel of the tray to connect to the screw hole of HDD. (ME-280J supports 2.5" SSD/SATA drive up to 15mm height)
3. Push the HDD tray into the casing along the track of ME280J.

Note : To avoid cracking the plastic side-panel of the tray (showed on photo 2), please do not over pull it when installing or uninstalling the drive.



3. Hardware RAID Setting

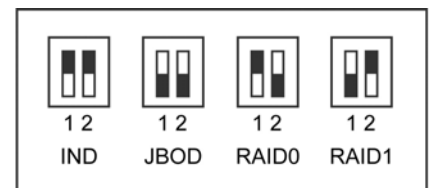
ME-280J offers 4 different configurations of RAID function (Individual / JBOD / RAID 0 / RAID 1) , the default setting is Individual Mode. Before using the RAID service of ME-280J, you have to set up the RAID Switch first (on the rear panel of ME-280J) in order to choose the preferred RAID configuration.

Notes : Any RAID mode swap will cause possible data loss, always remember to backup your files before changing RAID mode.

Please follow below steps before re-build the RAID mode of ME-280J.

1. Backup data from the HDD to others.
2. Power off ME-280J.
3. Properly select the operation mode you prefer by adjusting the RAID Switch.
4. Power on ME-280J.
5. Plug in USB cable or eSATA cable.

RAID Switch Indication



Notes : If you want to use JBOD · RAID0 or RAID1 Mode, you must insert two hard drives otherwise the enclosure will not work.

4. Remarks

1. The detailed installation manual can be found in the "User Manual" of the CD.
2. The product is compliant with CE/FCC/UL/RoHS/WEEE.